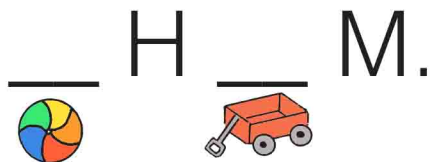
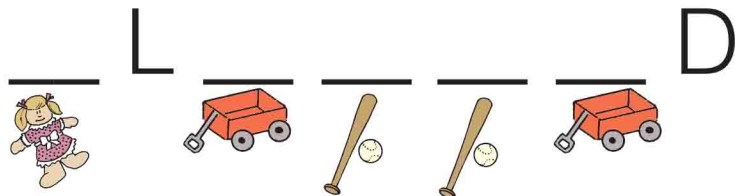
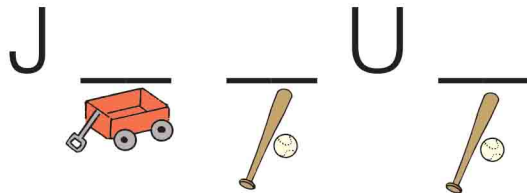


Jesus took the children into His arms. What did He do next?



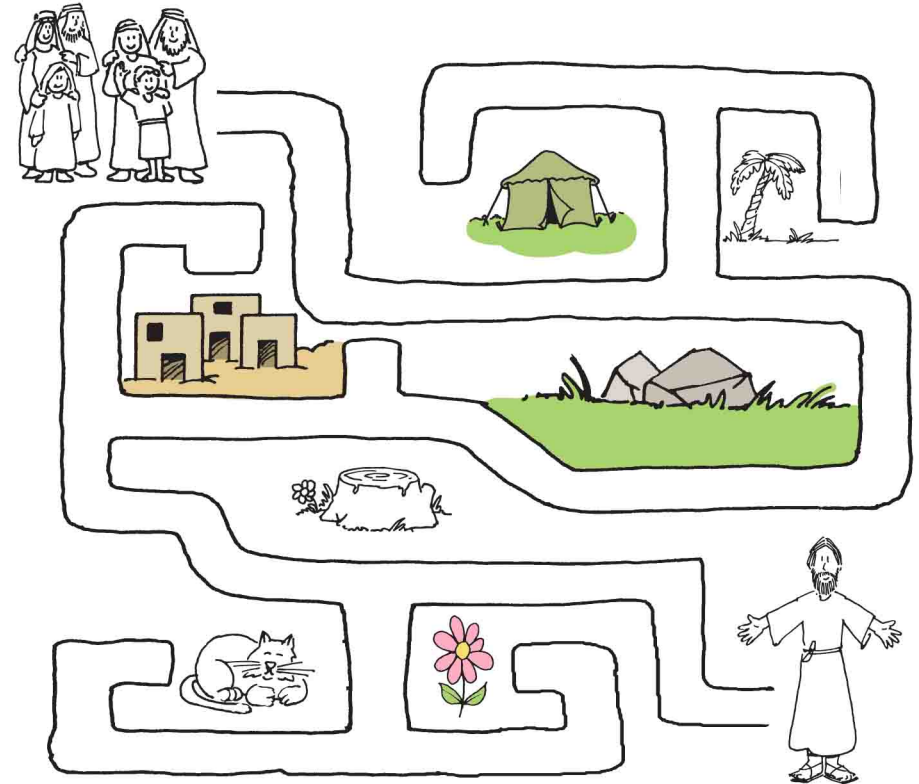
Use the code to fill in the missing letters.



# Children Come to Jesus

People brought their little children to Jesus.

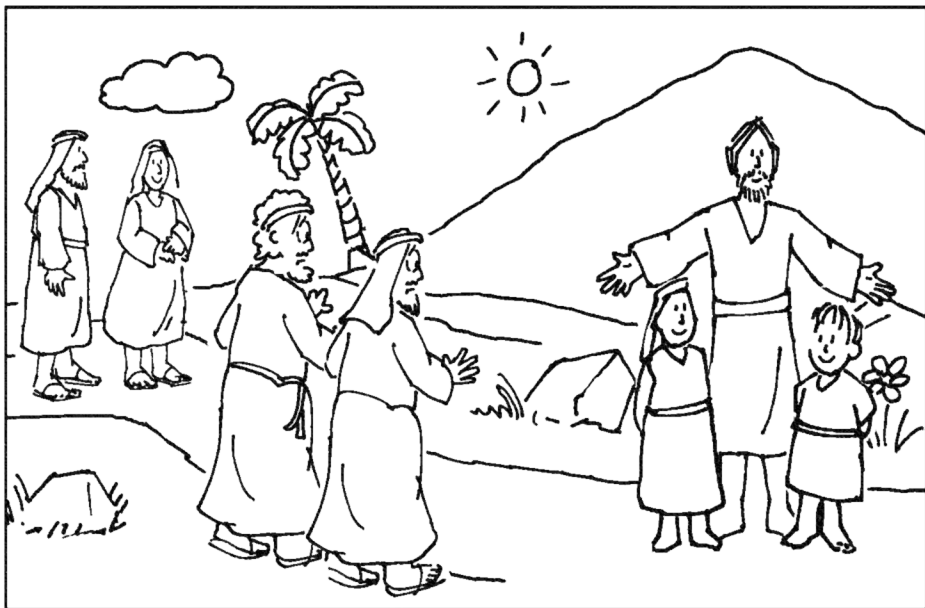
Help the children reach Jesus.



Christ the Servant Lutheran Church, 1100 East Benjamin Avenue, Norfolk, is a community of people who are: CALLED by God, TRANSFORMED by the Holy Spirit, and SENT into the world.

The disciples tried to stop the people.

Circle 7 differences in the bottom picture.



Jesus said, "Let them come."



Count the hidden hearts.  
Trace the number below.



5 or 6 or 7 ?